

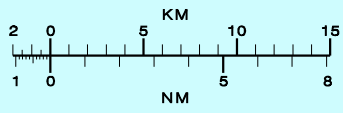
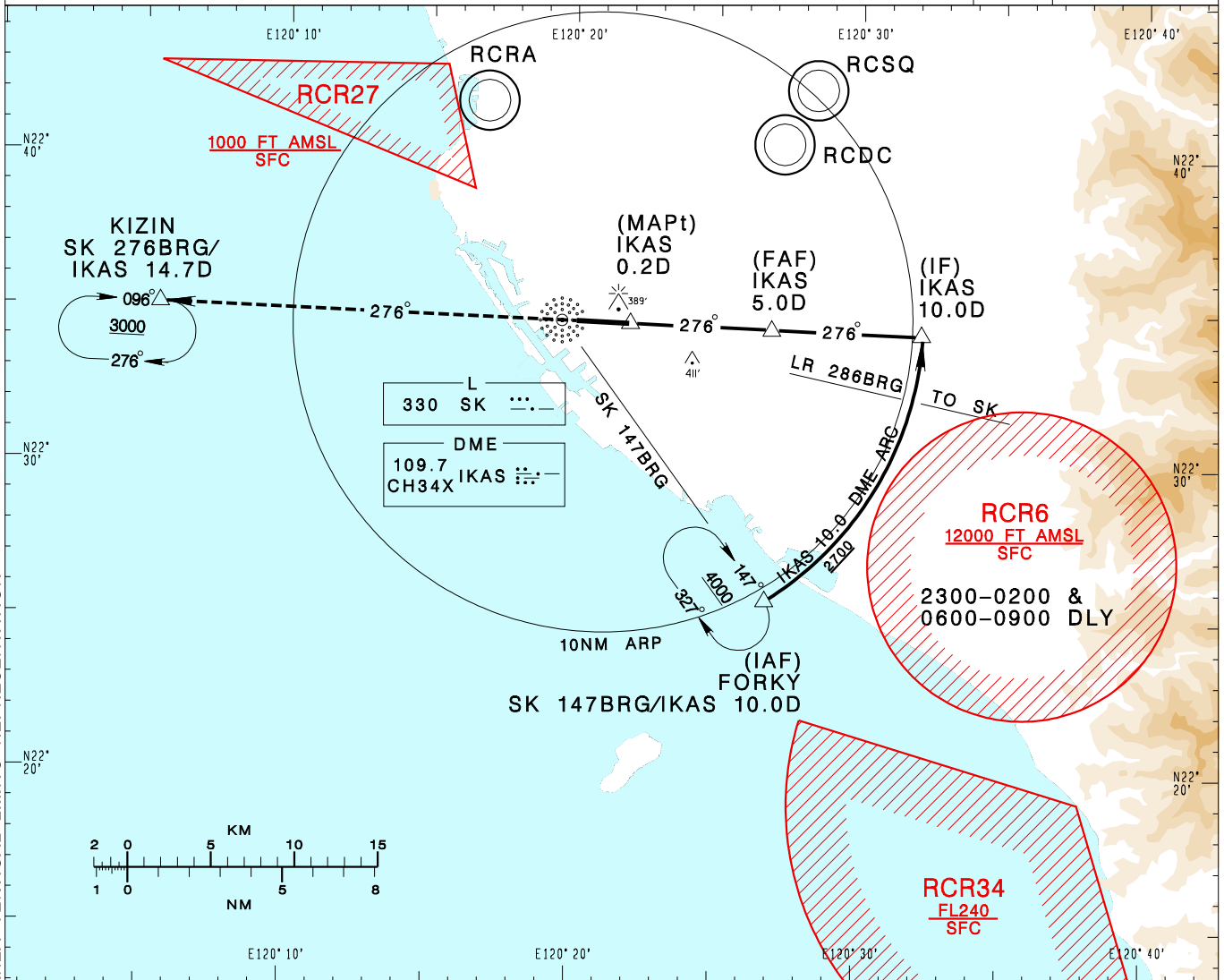
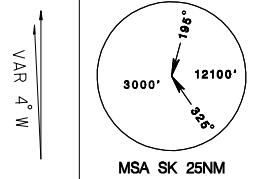
高雄國際機場
KAOHSIUNG INTL AD

RCKH
NDB RWY27

KAOHSIUNG APP 124.7 125.7	KAOHSIUNG TWR 118.7 120.7	ATIS 127.8
------------------------------	------------------------------	---------------

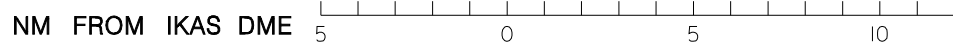
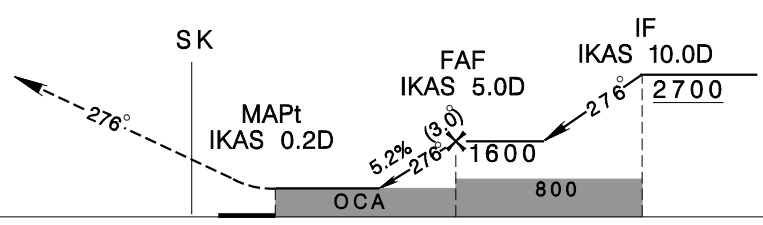
Apt Elev: 32' Rwy27 DTHR Elev: 31' Trans Level: FL130 Trans Alt: 11,000'

BEARINGS ARE MAGNETIC; DISTANCES ARE NAUTICAL MILES; ELEVATIONS, HEIGHTS IN FEET



DIST to IKAS	3DME	4DME	5DME
ADVISORY ALT	980	1300	1600

MISSED APCH:
CLIMB DIRECT TO SK, THEN
TRACK SK 276BRG TO KIZIN,
CLIMB TO 3000 AND HOLD.



MINIMA (OCA IN FT, VIS IN M, OCH IN FT)

CATEGORY	A	B	C	D
STRAIGHT IN	640/1200 RVR1200 608		640/2100 608	
STRAIGHT IN (ALS OUT)	640/1600 608		640/2800 608	

NOTE
1. CIRCLING NOT AUTHORIZED.
2. THE INITIAL APCH ARC INFRINGES RCR-6 AREA, PRIOR COORDINATION WITH ROCAF WILL BE COMPLETED BY ATC BEFORE ISSUING CLEARANCE DURING RCR-6 ACTIVE HOURS.
*DME REQUIRED

CHANGES: NEW PAGE NUMBER, UPDATE RESTRICTED AREA VERTICAL LIMITS REPRESENTATION